



**IN FOCUS  
SOLUTIONS<sub>LLC</sub>**

# **CS FLUSH MOUNT TAIL LIGHT KIT INSTALLATION INSTRUCTIONS**

## **Kit Contents:**

- 4 – Tail Light Seals
- 8 – Phillips Head Screws
- 8 – Tail Light Spacers (6 long, 2 short)
- 2 – Alcohol Wipes

1. Remove screws with Torx-15 screwdriver

## **Tools Needed:**

- Torx-15 Screwdriver
- Phillips Head Screwdriver

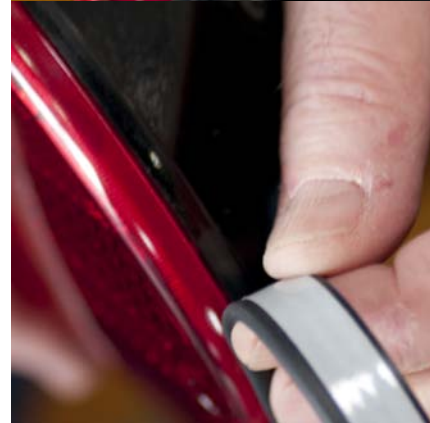
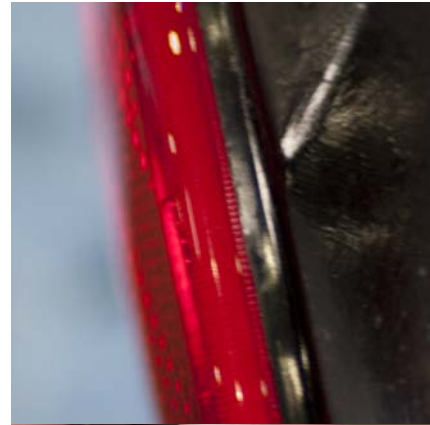
2. Remove & disconnect tail light

3. Clean tail light & bumper of dirt & loose debris



4. Clean tail light rim with alcohol wipe & allow to dry

5. Starting in the bottom center of the tail light, apply seal to black plastic so rounded edge hangs slightly over the red plastic lens. Trim the end as needed.



6. Insert Phillips head screws through tail light & place a spacer on the back. Short spacers are for the two outermost screws, long spacers are for 6 innermost screws.



7. Reinstall tail light.

